

John Luttman's Joke of the Week



Q. An honest politician, a kind lawyer and Santa Claus were walking down the street and saw a \$20 bill. Which one picked it up?

See answer page 25



THE INDEPENDENT CROSSWORD

ACROSS

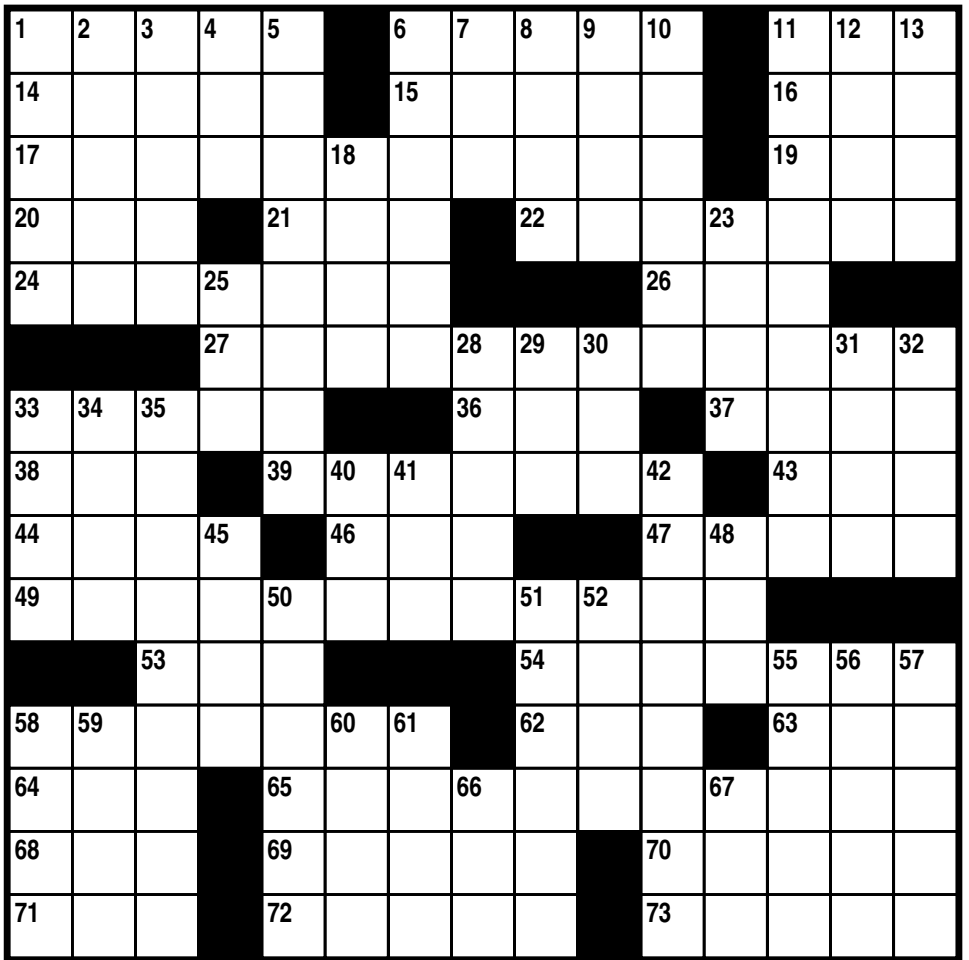
- 1 Sci-fi writer Davidson
- 6 In the vanguard
- 11 Harvard deg.
- 14 Caterpillar pipe?
- 15 It means sleep
- 16 Mfg. reject
- 17 He played Santa Claus in 2003
- 19 Tennis do-over
- 20 Soyinka autobiography
- 21 Make lace
- 22 They have a limit of one half-bushel per week
- 24 Spanish godfather
- 26 Maritime monogram
- 27 He played Santa Claus in 2007
- 33 Part of the SSA
- 36 E-mail address suffix
- 37 House division
- 38 King of Portugal
- 39 Eastern locale, locally
- 43 Big guns in DC?
- 44 Keyboard keys
- 46 2002 Sega video-game release
- 47 Structural support
- 49 He plays Santa Claus in 2008
- 53 Prince of Broadway
- 54 Orchid color
- 58 African ___ House
- 62 DDE's arena

- 63 "Catch-22" character
- 64 WWW bookmark
- 65 He played Santa Claus on TV in 2006
- 68 Shop ___ you drop
- 69 Davis of "32 Flavors" fame
- 70 Newswoman Sawyer
- 71 Annapolis grad.
- 72 Really dislikes
- 73 Particular meaning

DOWN

- 1 Lots
- 2 Triple Eight ___
- 3 Left Brant Point, in a way
- 4 Alias preceder
- 5 "The War of the Worlds" invaders
- 6 Schnitzler play
- 7 Been lead-in
- 8 Rubik of cube game fame
- 9 Card game opener?
- 10 Back
- 11 Road where the first daffodils were planted in 1974
- 12 Bro
- 13 Nantucket ___ Festival
- 18 Mother of the Irish gods
- 23 Old ruler

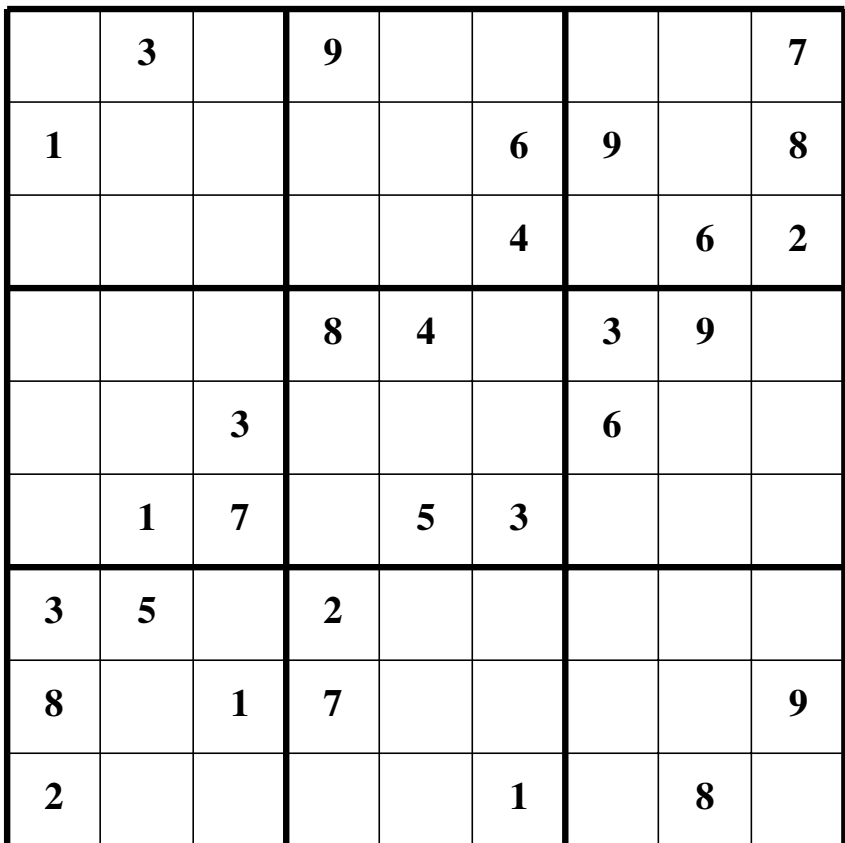
- 25 College in Troy, NY
- 28 Great Muppet character
- 29 Org. that refunds
- 30 Vital statistic
- 31 Hebrew instruction
- 32 Islamic prayer leader
- 33 William Saroyan's son
- 34 Cowboy's Meat Market & ___
- 35 Astronomer Maria and family
- 40 Wail
- 41 Pound's preposition
- 42 Incriminating evidence
- 45 Thirty-two card game
- 48 "Sayonara!"
- 50 Wood in "The Faculty"
- 51 Greek letters
- 52 Operation Allied Force gp.
- 55 Start of a Donne quote
- 56 Atlantic lead-in
- 57 Water buffalo
- 58 Wordless
- 59 Enya's land
- 60 Big Easy acronym
- 61 Mountain pass
- 66 NYC to Boston dir.
- 67 Casino cube



PUZZLE BY SAM BELLOTTO JR.

Answers on page 35

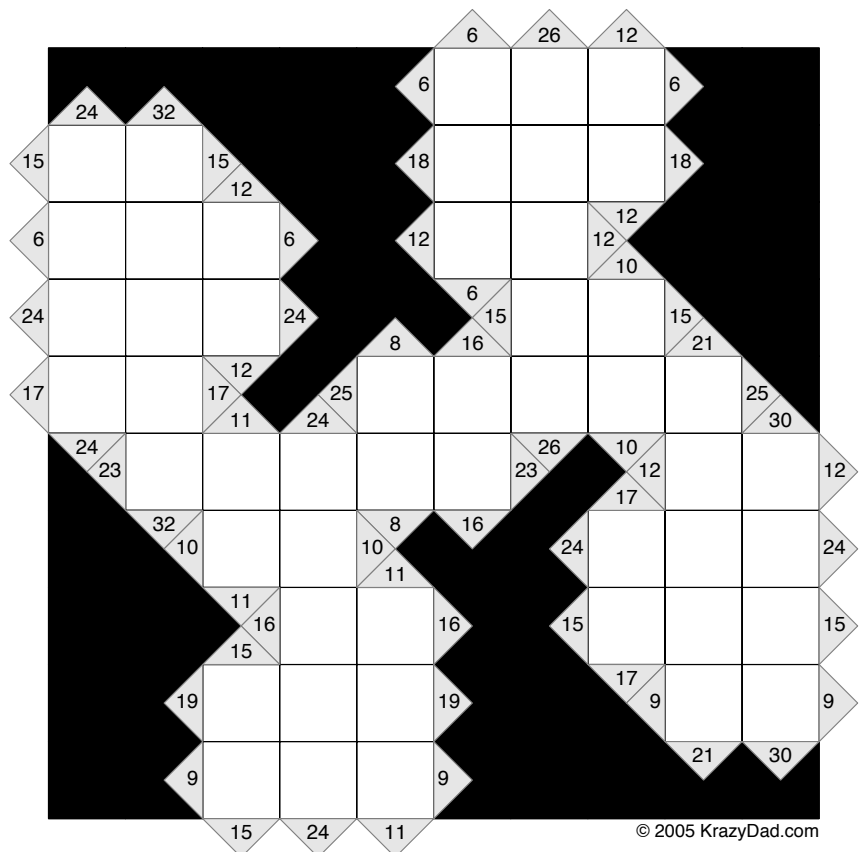
THE INDEPENDENT SUDOKU



PUZZLE BY OPENSKY

Sudoku is a Japanese logic puzzle that consists of a 9-by-9 grid with some of the 81 squares filled in with numbers. Your challenge is to fill in the rest. There's only one simple, but often maddening, rule: The numbers 1 through 9 must appear only once in each of the grid's nine rows, nine columns, and nine 3-by-3 blocks. Proper sudokus have only one solution, meaning they can always be solved by logic. Don't place a number unless you have determined it is the only number that can go in that square. Trial and error guessing is hard work unless there are only a few squares remaining to solve.

THE INDEPENDENT KAKURO



© 2005 KrazyDad.com

Kakuro puzzles are like a cross between a crossword and a Sudoku puzzle. Instead of letters, each block contains the digits 1 through 9. The same digit will never repeat within a word. If you add the digits in a word, the sum will be the number shown in the clue. Clues are shown on the left and right sides of "across" words, and on the top and bottom sides of "down" words

Answers on page 35